

RIGHT NOW

APRIL NEW PRODUCTS



Modo



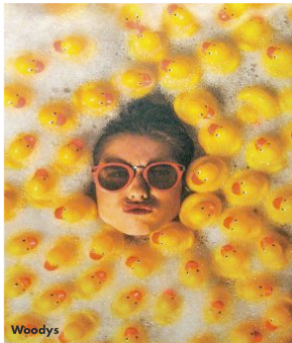
Okia



Göffi



Lafont



Woody's

POINTS OF INTEREST

With record-breaking attendance numbers at this year's MIDO, the Milan-based show, which took place from Feb. 28 through March 2 at the Fiera Milano Rho-Pero pavilions, offered a sweltering heat index during the coldest winter months. Over 49,000 visitors swarmed the halls during the three-day event with 56 percent coming from outside of Italy.

Here 20/20 offers a curated selection of the most intriguing designs spotted at the show. From electric trim juxtaposing the ornate against the technologically-advanced, we found that embellishment can serve as a bridge between past and future.

—Patrisha Holly Zabrycki

With photo contributions from Lenor Fowler



Kenzo



Christian Lacroix from Mondottica



B.Barn's



Jimmy Crystal New York from A&A Optical

NEW PRODUCT PRICE GUIDE	\$	\$\$	\$\$\$	\$\$\$\$	\$\$\$\$\$
	INEXPENSIVE	MODERATE	MODERATELY EXPENSIVE	EXPENSIVE	VERY EXPENSIVE

April 2015 20/20 • 71